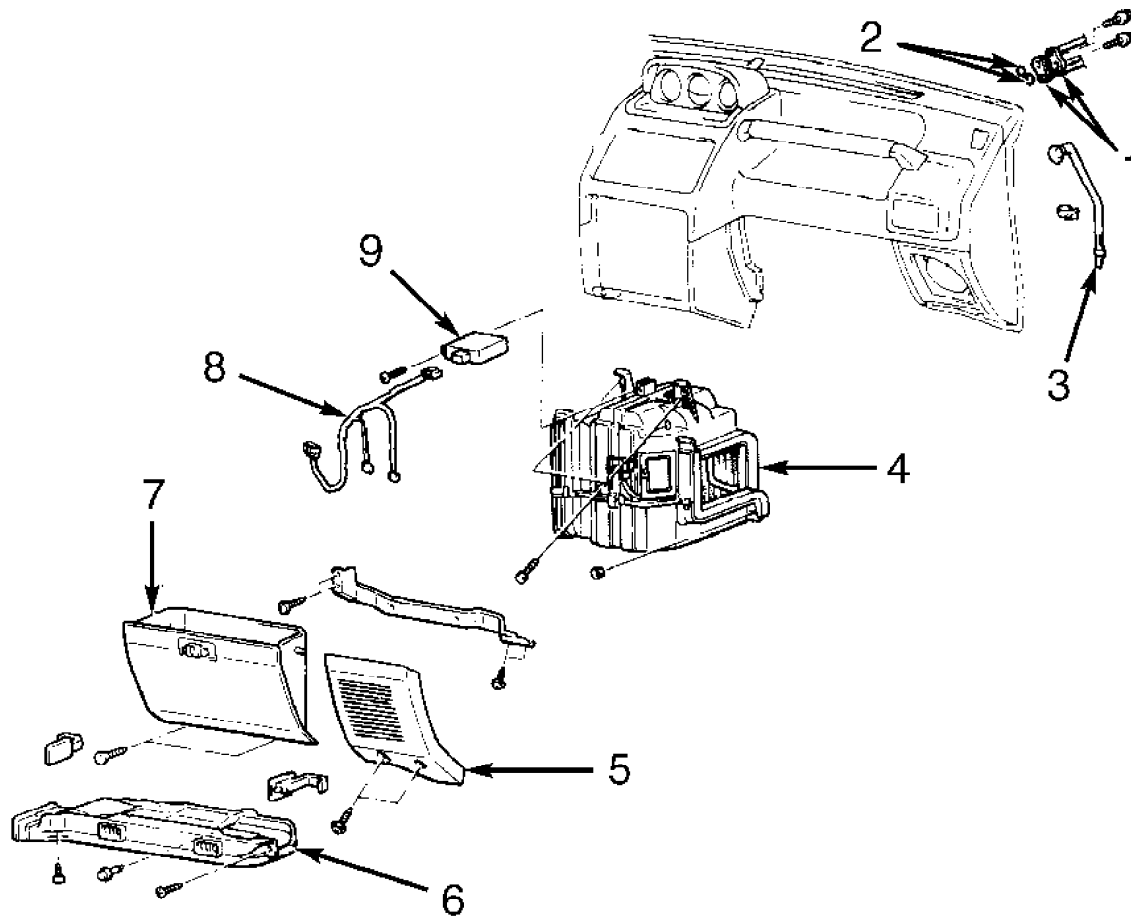


Removal & Installation

1) Discharge A/C system using approved refrigerant recovery/recycling equipment. Remove glove box with lower frame attached. Loosen duct joint bolt to free duct joint. Disconnect A/C switch harness. Disconnect evaporator drain hose.

2) Disconnect refrigerant lines at firewall side of engine compartment. Remove evaporator top attaching bolts in passenger compartment. Remove evaporator assembly. To install, reverse removal procedure. See Figs. 14 and 15.



- 1. High & Low Pressure Hoses
- 2. "O" Ring
- 3. Drain Hose
- 4. Evaporator
- 5. Speaker Cover

- 6. Foot Shower Duct
- 7. Glove Box
- 8. A/C Wiring Harness
- 9. A/C Control Unit

93D19565

Fig. 14: Removing Evaporator Assembly
Courtesy of Mitsubishi Motor Sales of America.